

Creating a Self-Running PPT

The fun of it all...



Create Your Presentation

- Words
- Pictures
- Clips
- Slide Design
- Audio accompaniment



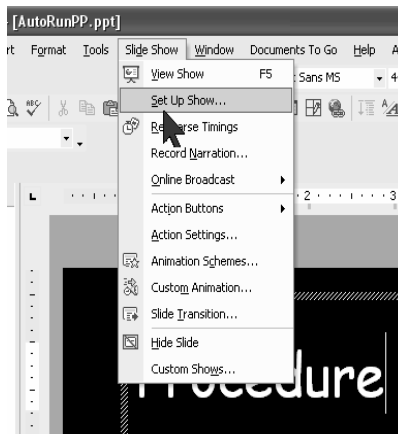
Many choices

- Time each slide individually
- Time all slides the same
- Advance after all Custom Animations have occurred

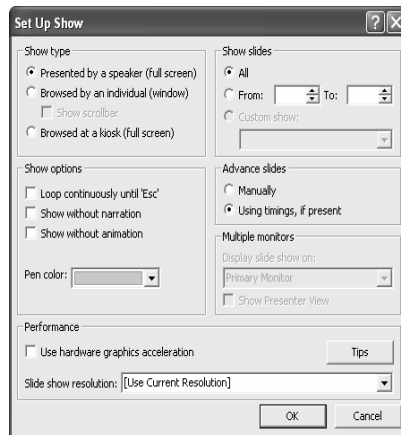


Procedure

- Click on menu Slide Show
- Then Set Up Show



Set Up Show window



- Explore your many choices on Set Up Show window
- Click "OK" when finished



An Aside on Menus



- Note that most items in the menu bar have an underlined letter
- You may choose an item by holding down the <ALT> key while striking the underlined letter
- e.g., To select Slide Show <ALT> + D



Slide Transition

- Slide Show > Slide Transition
- Bottom of window at right of Normal View in Pwr Pt allows you to:
 - Advance Automatically
 - Apply to all side or an individual slide



Give it a try...



Suggestion

- Create a 3 or 4 slide presentation
- Set advance to 10 seconds
- Apply to all

