

# NAIC Stock Prospector Tips & Tricks

## A Quick Stock Comparison Guide within Prospector

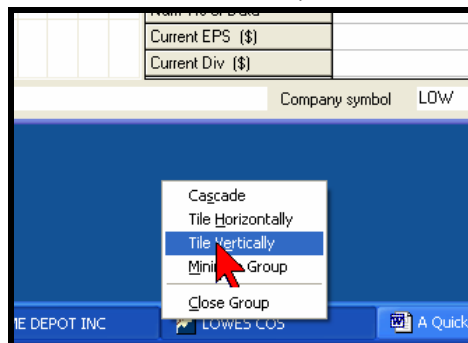
This Tip will show you how to quickly display the Prospector Mini Visual Analysis for two companies and for more than two companies.

Steps:

1. Open Prospector, perform your favorite Criteria, select the report of your choice, and display the Query.

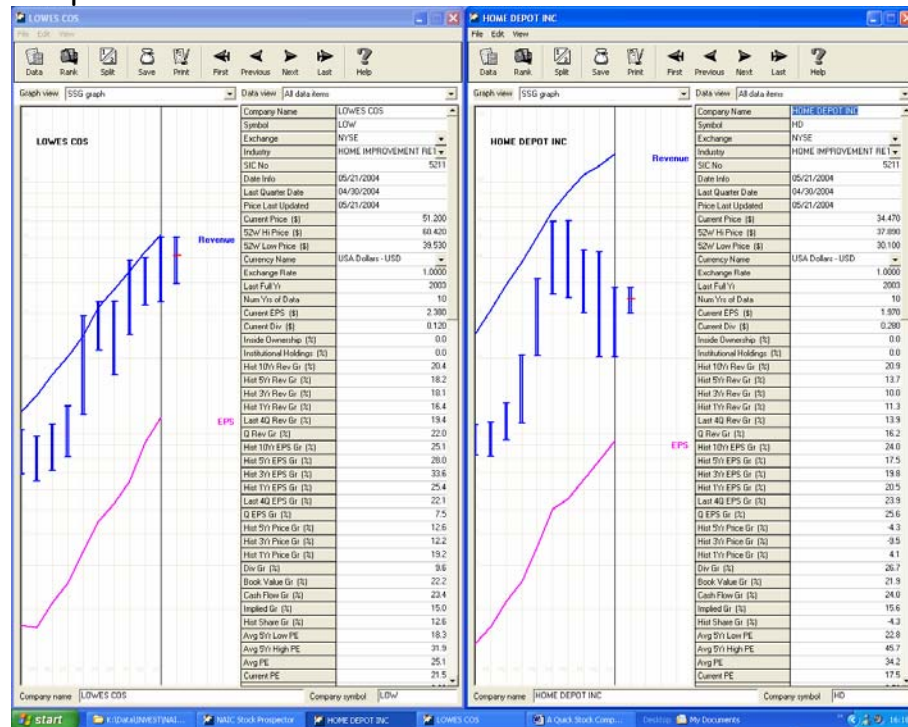
Weighted ranking	Symbol	Company Name	Industry	Exchange	RelPrice (%)	Sales (\$)	Des Growth	Current PE	Current EPS (\$)
3.5		<b>Minimum values</b>			0.0	51	7.0	0.0	0.750
5.3		<b>Average values</b>			49.6	10,508	9.7	15.8	2.832
7.5		<b>Maximum values</b>			87.1	64,816	15.0	23.0	6.670
1	5.1 AZO	AUTOZONE INC	SPECIALTY STORES	NYSE	29.7	5,457	7.0	14.0	5.900
2	5.4 HRB	BLOCK H & R INC	DIVERSIFIED COMME	NYSE	39.0	3,651	8.1	13.7	3.440
3	3.5 CAPX	CAPITAL CROSSING BANK	THRIFTS & MORTGAI	NASDAQ	59.8	107	15.0	8.5	6.670
4	6.0 KOF	COCA-COLA FEMSA SA DE CV	SOFT DRINKS	NYSE	22.1	1,685	10.8	15.0	1.410
5	3.9 DP	DIAGNOSTIC PRODUCTS CORP	HEALTH CARE EQUIP	NYSE	33.0	381	15.0	19.4	2.080
6	3.9 ESRX	EXPRESS SCRIPTS INC	HEALTH CARE SERV	NASDAQ	84.6	13,295	7.0	23.0	3.340
7	5.1 FITB	FIFTH THIRD BANCORP	REGIONAL BANKS	NASDAQ	24.3	6,474	7.0	17.7	3.020
8	7.5 HD	HOME DEPOT INC	HOME IMPROVEMEN	NYSE	56.1	64,816	7.0	17.5	1.970
9	5.6 JNJ	JOHNSON & JOHNSON	PHARMACEUTICALS	NYSE	82.6	41,862	7.0	19.7	2.790
10	5.4 LNCR	LINCARE HOLDINGS INC	HEALTH CARE SERV	NASDAQ	39.3	1,147	12.1	14.6	2.350
11	5.3 LOW	LOWES COS	HOME IMPROVEMEN	NYSE	55.9	30,838	7.0	21.5	2.380
12	5.4 LUX	LUXOTTICA GROUP SPA	APPAREL, ACCESSOF	NYSE	61.7	3,284	8.5	21.2	0.750
13	5.3 MI	MARSHALL & ILSLEY CORP	REGIONAL BANKS	NYSE	87.1	2,741	9.1	15.0	2.620
14	4.4 NKE	NIKE INC	FOOTWEAR	NYSE	61.7	10,637	7.0	20.4	3.300
15	4.0 DVBC	OHIO VALLEY BANC CORP	REGIONAL BANKS	NASDAQ	80.6	51	15.0	18.2	1.890
16	6.1 SRE	SEMPRA ENERGY	MULTI-UTILITIES & U	NYSE	74.7	7,887	7.0	7.5	4.150
17	7.4 TUES	TUESDAY MORNING CORP	GENERAL MERCHAN	NASDAQ	0.0	823	13.3	0.0	1.390
18	5.4 TUES	TUESDAY MORNING CORP	GENERAL MERCHAN	NASDAQ	28.2	823	13.3	18.2	1.390
19	5.6 UHS	UNIVERSAL HEALTH SVCS -CL B	HEALTH CARE FACIL	NYSE	22.9	3,642	8.1	14.4	2.970

2. Note that in this Query both Home Depot and Lowes are present. You would like to see their Company screens displayed side by side for comparison.
  - a. Double click on Home Depot to open its Company screen.
  - b. Do the same for Lowes.
  - c. With either Home Depot or Lowes window selected, <CTRL> + Right Click on the name of the other company, then choose Tile Vertically.



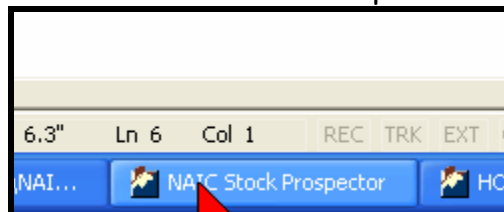
## A Quick Stock Comparison Guide within Prospector (continued)

- d. The two companies will be displayed side by side providing a good comparison view.



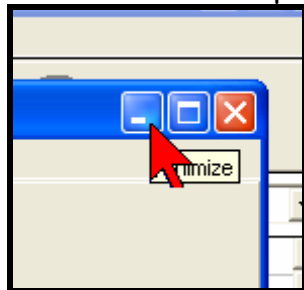
3. Now let us add two more companies.

- a. Select NAIC Stock Prospector in the bottom Task Bar



- b. Select two more companies. For this example choose Lincare and Johnson & Johnson.

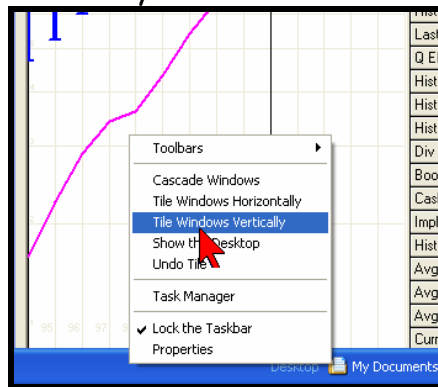
- c. Minimize the Prospector window at its upper right.



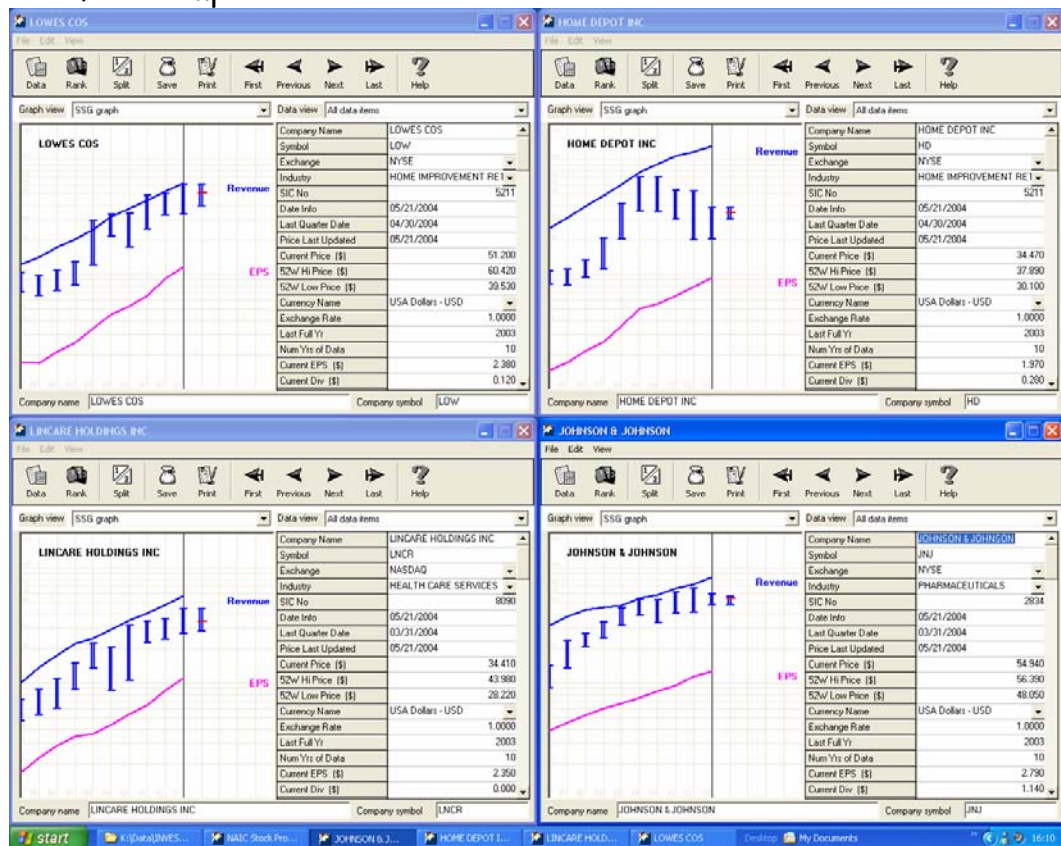
- d. Move the cursor to a clear area in the bottom task bar, right click, then select either Tile Windows Horizontally or Tile Windows

## A Quick Stock Comparison Guide within Prospector (continued)

Vertically.



e. The four companies will be shown as below



4. Now let us again select Prospector from the bottom Task Bar and open a fifth company. Without minimizing Prospector this time, once again select a clear area in the bottom Task Bar, Right Click and select either Tile Windows Horizontally or Tile Windows Vertically. All six open windows (Prospector and the five companies) will be neatly arrayed across your entire screen as below.

# A Quick Stock Comparison Guide within Prospector (continued)

The screenshot displays the NAIC Stock Prospector software interface with six individual stock comparison windows. Each window shows a line graph for Revenue (blue) and EPS (pink) over time, along with a table of financial data.

**WINDOW 1: BLOCK H & R INC**

Company Name	BLOCK H & R INC
Symbol	HRB
Exchange	NYSE
Industry	DIVEF
SIC No	7200
Date Info	05/21/20
Last Quarter Date	01/31/20
Price Last Updated	05/21/20
Current Price (\$)	47.000
52w Hi Price (\$)	61.000
52w Low Price (\$)	38.050
Currency Name	USA C
Exchange Rate	1.0000
Last Full Yr	2002
Num Yrs of Data	10
Current EPS (\$)	3.440
Current Div (\$)	0.800

**WINDOW 2: LINCARE HOLDINGS INC**

Company Name	LINCARE HOLDINGS INC
Symbol	LNCR
Exchange	NASD
Industry	HEAL
SIC No	8090
Date Info	05/21/20
Last Quarter Date	03/31/20
Price Last Updated	05/21/20
Current Price (\$)	34.410
52w Hi Price (\$)	43.980
52w Low Price (\$)	28.220
Currency Name	USA C
Exchange Rate	1.0000
Last Full Yr	2003
Num Yrs of Data	10
Current EPS (\$)	2.350
Current Div (\$)	0.000

**WINDOW 3: HOME DEPOT INC**

Company Name	HOME DEPOT INC
Symbol	HD
Exchange	NYSE
Industry	HOME
SIC No	5211
Date Info	05/21/20
Last Quarter Date	04/30/20
Price Last Updated	05/21/20
Current Price (\$)	34.470
52w Hi Price (\$)	37.890
52w Low Price (\$)	30.100
Currency Name	USA C
Exchange Rate	1.0000
Last Full Yr	2003
Num Yrs of Data	10
Current EPS (\$)	1.970
Current Div (\$)	0.280

**WINDOW 4: JOHNSON & JOHNSON**

Company Name	JOHNSON & JOHNSON
Symbol	JNJ
Exchange	NYSE
Industry	PHAR
SIC No	2834
Date Info	05/21/20
Last Quarter Date	03/31/20
Price Last Updated	05/21/20
Current Price (\$)	54.940
52w Hi Price (\$)	56.390
52w Low Price (\$)	48.050
Currency Name	USA C
Exchange Rate	1.0000
Last Full Yr	2003
Num Yrs of Data	10
Current EPS (\$)	2.790
Current Div (\$)	1.140

**WINDOW 5: LOWES COS**

Company Name	LOWES COS
Symbol	LOW
Exchange	NYSE
Industry	HOME
SIC No	5211
Date Info	05/21/20
Last Quarter Date	04/30/20
Price Last Updated	05/21/20
Current Price (\$)	51.200
52w Hi Price (\$)	60.420
52w Low Price (\$)	39.530
Currency Name	USA C
Exchange Rate	1.0000
Last Full Yr	2003
Num Yrs of Data	10
Current EPS (\$)	2.380
Current Div (\$)	0.120

**WINDOW 6: NAIC Stock Prospector (Main Window)**

Weighted ranking	Symbol	Company Name	Industry
3.5		<b>Minimum values</b>	
5.3		<b>Average values</b>	
7.5		<b>Maximum values</b>	
1	5.1 AZO	AUTOZONE INC	SPECIALTY STC
2	5.4 HRB	BLOCK H & R INC	DIVERSIFIED C
3	3.5 CAPX	CAPITAL CROSSING BANK	THRIFTS & MOF
4	6.0 KOF	COCA-COLA FEMSA SA DE CV	SOFT DRINKS
5	3.9 DP	DIAGNOSTIC PRODUCTS CORP	HEALTH CARE
6	3.9 ESPX	EXPRESS SCRIPTS INC	HEALTH CARE
7	5.1 FITB	FIFTH THIRD BANCORP	REGIONAL BAN
8	7.5 HD	HOME DEPOT INC	HOME IMPROVI
9	5.6 JNJ	JOHNSON & JOHNSON	PHARMACEUTI
10	5.4 LNCR	LINCARE HOLDINGS INC	HEALTH CARE
11	5.3 LOW	LOWES COS	HOME IMPROVI
12	5.4 LUX	LUXOTTICA GROUP SPA	APPAREL ACCI
13	5.3 MI	MARSHALL & ILSLEY CORP	REGIONAL BAN
14	4.4 NKE	NIKE INC	FOOTWEAR
15	4.0 OVBC	OHIO VALLEY BANC CORP	REGIONAL BAN
16	6.1 SRE	SEMPRA ENERGY	MULTI-UTILITIE
17	7.4 TUES	TUESDAY MORNING CORP	GENERAL MER